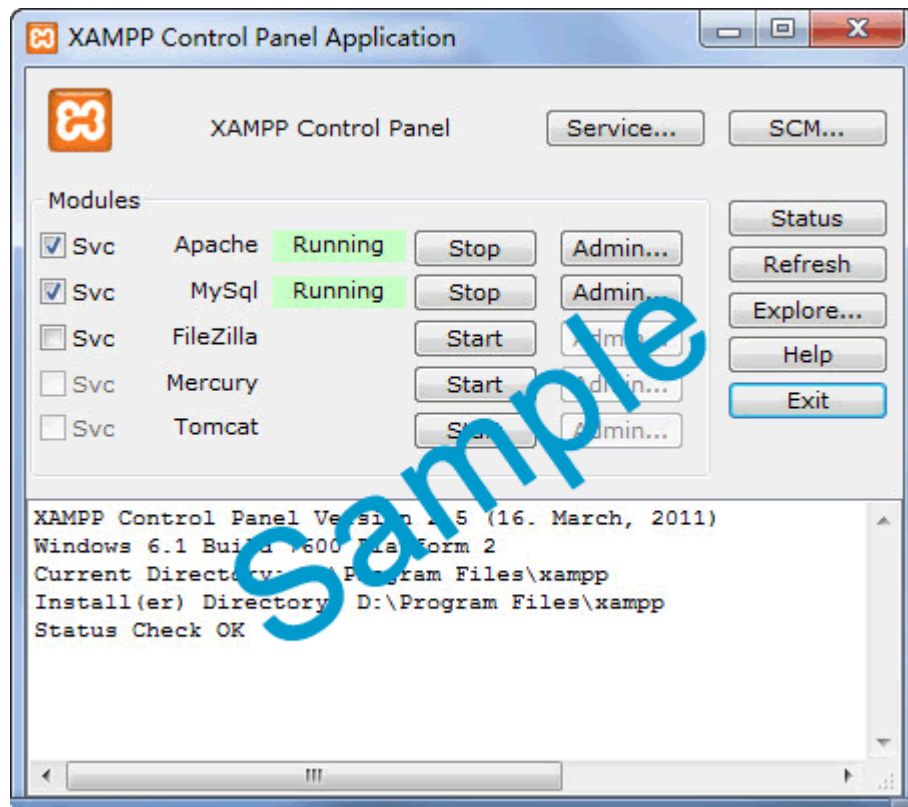
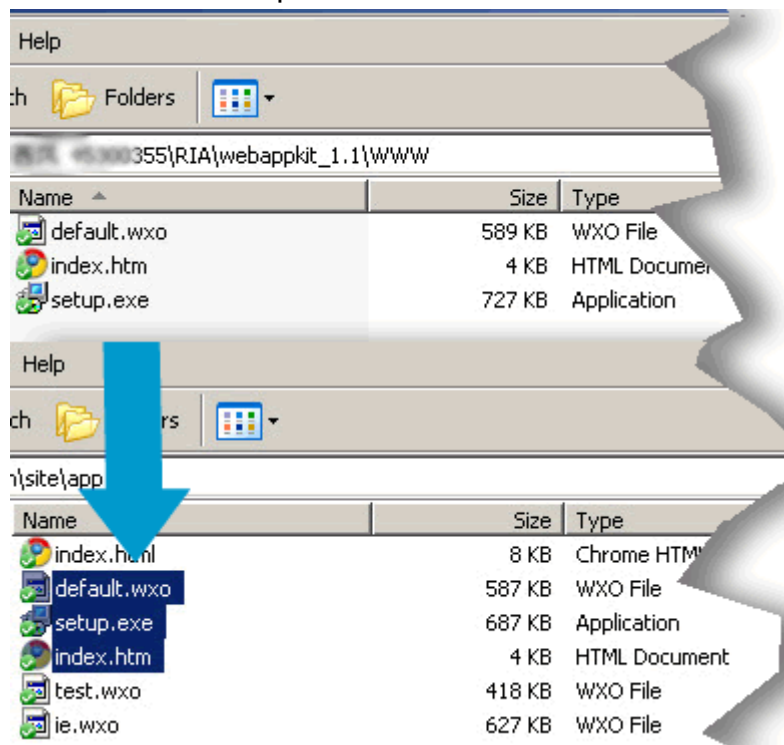


Step.1 setup a local server.



Step.2 copies all the files in 'WWW' folder and pastes them to the root of local server or a specified folder. The files in 'WWW' folder are default.wxo, index.htm and setup.exe.



Step.3 please input the address of local server with the saving path of index.htm to an IE or IE core browser (**important**). For example, the address of local server is 'http://127.0.0.1:8080' and you have pasted index.htm file to the root, then the correct test link should be: 'http://127.0.0.1:8080/index.htm'.

<http://127.0.0.1:8080/index.htm>

Local Server Addr.

Files in WWW
folder have
been pasted to
the ROOT of
local server

Step.4 presses Enter then you will be asked to install the IE Plug-in to load the test page correctly.

Welcome to use WebAPP Kit!

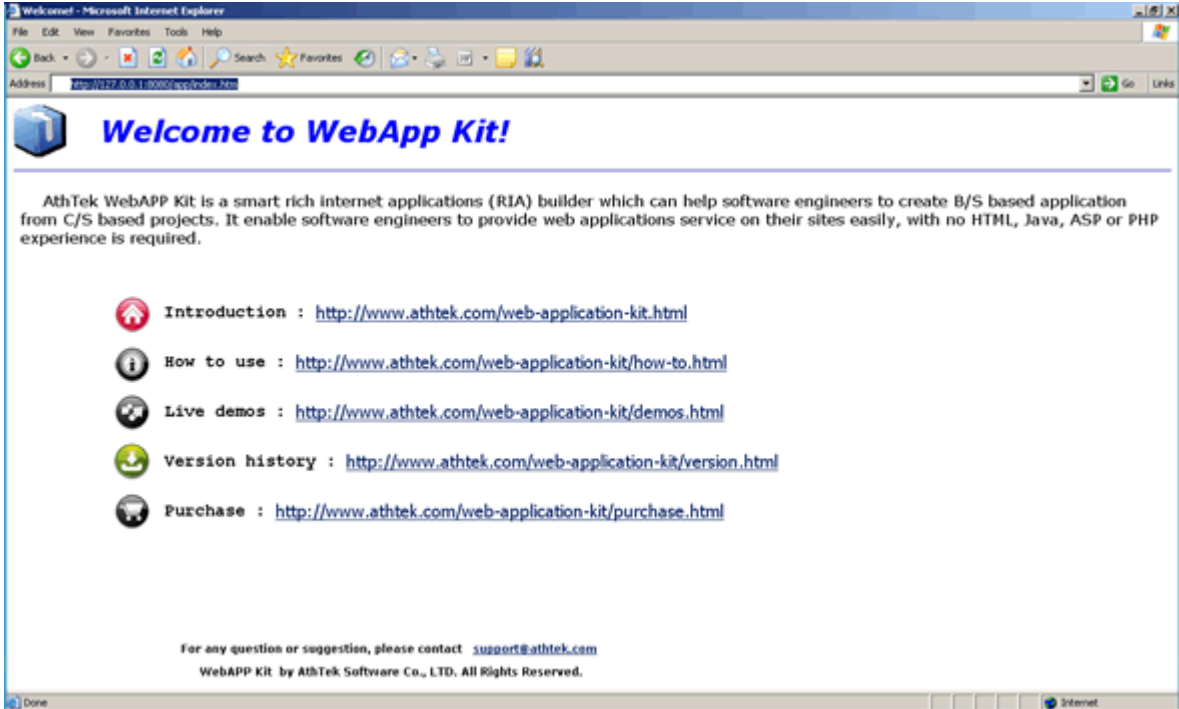
How to load this page:

- Please install the IE plug-in from [HERE](#) (first time only).
- Refresh your browser to load this page.

Note: WebAPP Kit can only work on IE or IE core browsers.

Step.5 after you have installed the IE plug-in, refresh your IE browser then you would see the following page and this means you have successfully deploy






[WebAPP Kit](#) to your local server.



The screenshot shows a Microsoft Internet Explorer browser window. The title bar reads "Welcome - Microsoft Internet Explorer". The address bar contains "http://127.0.0.1:8080/app/index.htm". The main content area features a blue header with the text "Welcome to WebApp Kit!". Below this, a paragraph describes AthTek WebAPP Kit as a smart rich internet applications (RIA) builder. A list of links is provided, each preceded by a small icon: Introduction, How to use, Live demos, Version history, and Purchase. At the bottom, contact information for support@athtek.com and a copyright notice for AthTek Software Co., LTD. are displayed.

Welcome to WebApp Kit!

AthTek WebAPP Kit is a smart rich internet applications (RIA) builder which can help software engineers to create B/S based application from C/S based projects. It enable software engineers to provide web applications service on their sites easily, with no HTML, Java, ASP or PHP experience is required.

-  Introduction : <http://www.athtek.com/web-application-kit.html>
-  How to use : <http://www.athtek.com/web-application-kit/how-to.html>
-  Live demos : <http://www.athtek.com/web-application-kit/demos.html>
-  Version history : <http://www.athtek.com/web-application-kit/version.html>
-  Purchase : <http://www.athtek.com/web-application-kit/purchase.html>

For any question or suggestion, please contact support@athtek.com
WebAPP Kit by AthTek Software Co., LTD. All Rights Reserved.